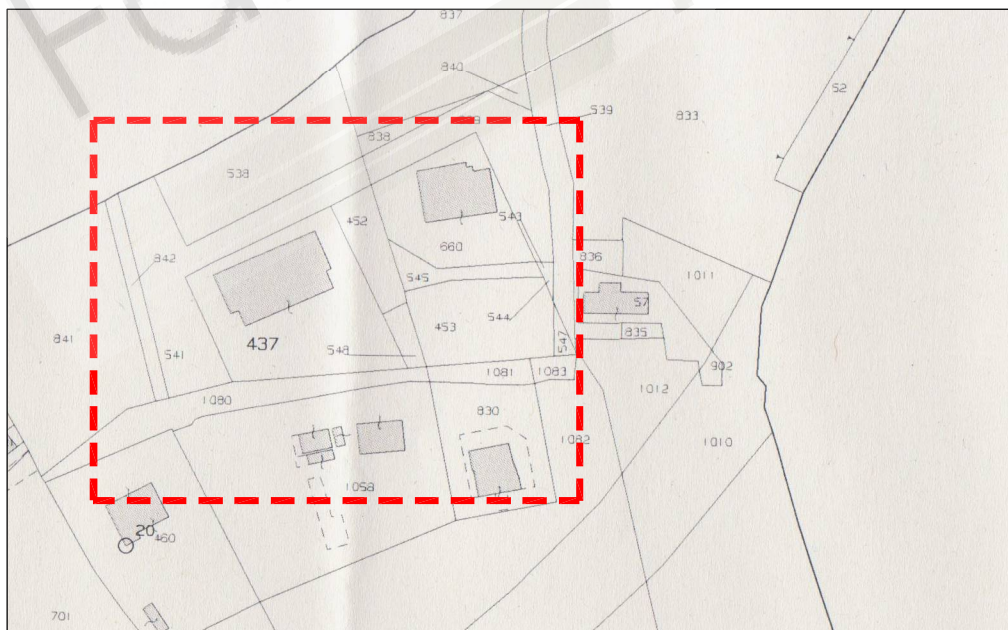
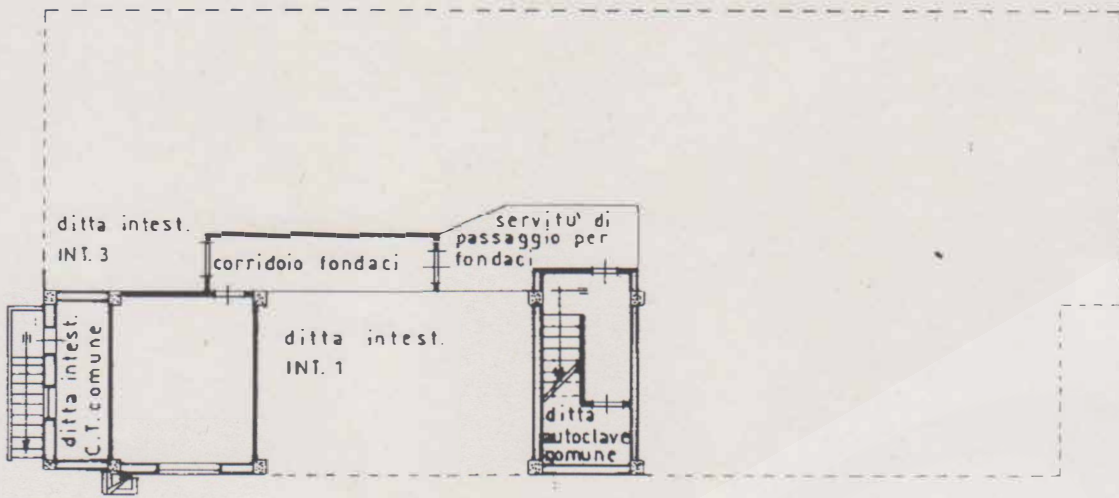


*STRALCIO DI PRG DEL COMUNE DI TERAMO:
ZONA G7 ZONE VERDE PRIVATO DI TUTELA AMBIENTALE*



STRALCIO DI PLANIMETRIA CATASTALE



PIANO SEMINTERRATO
FONDACO H = ML. 3.05

PLANIMETRIA FG. 72 P.LLA 437
SCALA 1:2000

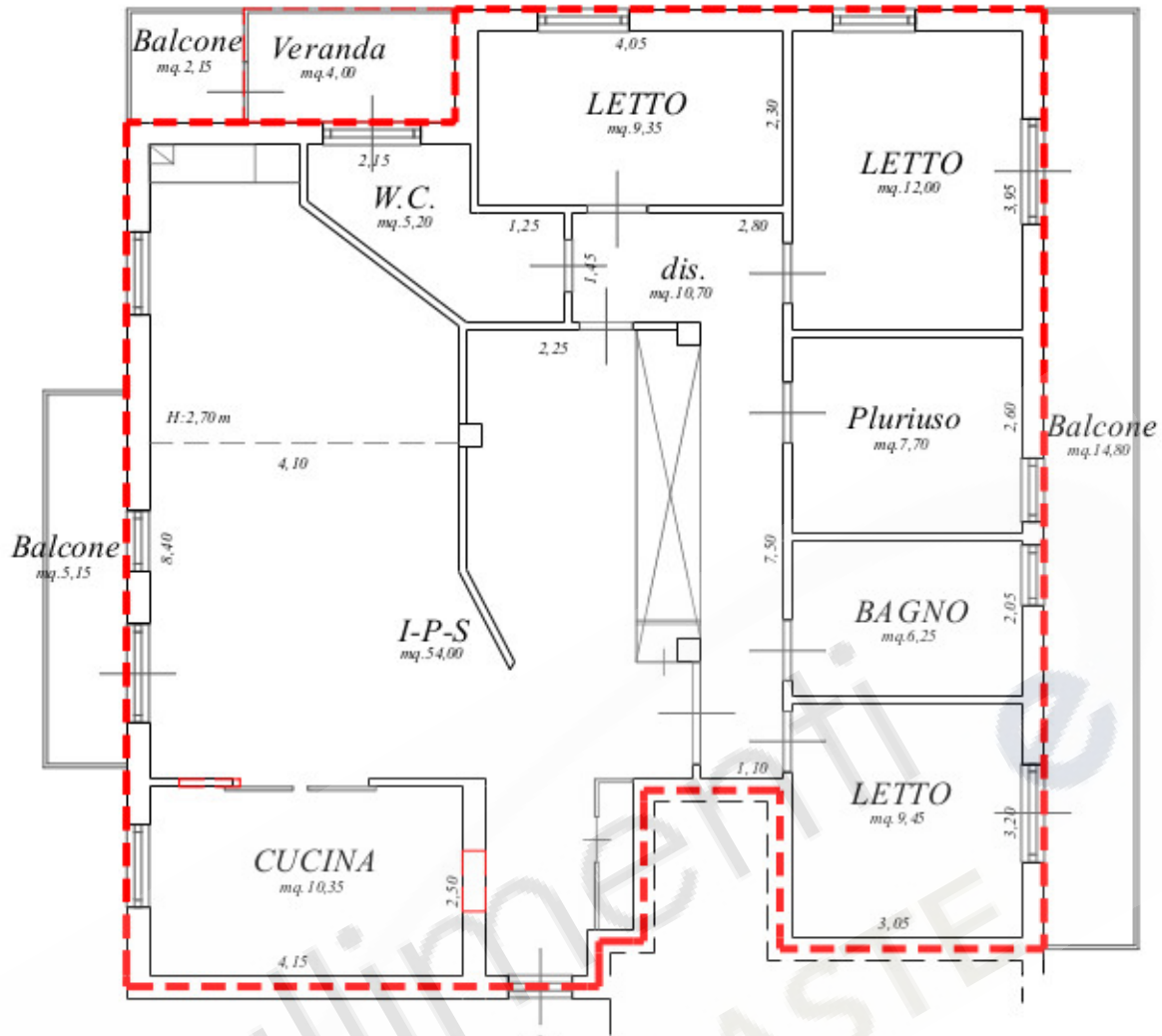
ditta

ditta

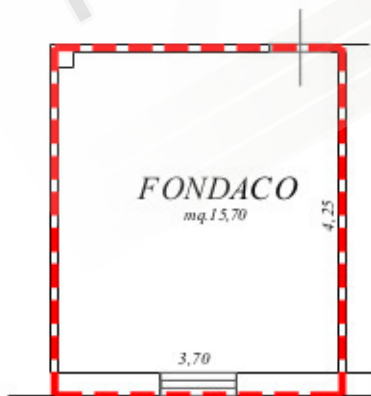


prolungamento
via Manthone

diritto di passaggio



PIANTA PIANO TERRA H: 2,88 m



PIANTA PIANO SEMINTERRATO:H:3,00 m

SUPERFICIE CALPESTABILE

APPARTAMENTO: 125,00 mq.

BALCONE: 26,10 mq.

FONDACO: 15,70 mq.

SUPERFICIE LORDA:

APPARTAMENTO: 144,00 mq.

BALCONE: 27,55 mq.

FONDACO: 17,50 mq.

